



1351 W. Second Street
 Oconomowoc, WI 53066
 Phone: 262-567-2288; 800-434-0062
 Fax: 262-567-0857
 E-mail: sales@ductowire.com

1445 Norjohn Ct., Unit 10
 Burlington, Ontario, Canada L7L 0E6
 Phone: 905-331-2612; 800-361-WIRE (9473)
 Fax: 905-331-6639; 800-663-0933
 E-mail: dow@ductowire.ca

PUSH BUTTON INSERTS RPB SERIES

SCHEMATIC & OPERATIONAL DIAGRAMS

⚠ WARNING

MAKE CERTAIN POWER SUPPLY IS DISCONNECTED BEFORE INSTALLING, REPAIRING, OR WORKING IN THE PROXIMITY OF ANY ELECTRICAL SYSTEM. ONLY QUALIFIED ELECTRICAL PERSONNEL SHOULD INSTALL OR REPAIR THESE PRODUCTS.

NOT DESIGNED FOR
 DC CIRCUITS

INSTRUCTIONS:

1. PEEL OFF THE BACKING OF THE DESIRED LABELS AND PRESS INTO THE LABEL CAVITIES ON THE STATION FACE. PRESS DOWN FOR ADHESION.
2. MEASURE THE END OF THE CABLE AND REMOVE THE CABLE JACKET BACK FOR PROPER WIRE LENGTH AND INSERT THROUGH THE CORD GRIP AND GROMMET. ON THE K MODEL, THE CORD GRIP CAN BE CUT TO MATCH THE CABLE SIZE.
3. STRIP THE WIRES BACK 1/4" AND CONNECT TO THE PROPER TERMINALS. TIGHTEN SECURELY.
4. ON THE RPB MODEL, CONNECT THE GREEN GROUND TO THE BACKPLATE WITH A #6 SCREW.
5. SECURE THE BACK COVER TO THE STATION AFTER WIRING IS COMPLETE.
6. CHECK THE CORD GRIP FOR FIT DEPENDING ON STATION USED.

IMPORTANT:

1. FOLLOW THE WIRING DIAGRAMS SUPPLIED BY THE MANUFACTURER OR CRANE BUILDER CLOSELY.
2. AFTER SAFETY PRECAUTIONS ARE FOLLOWED, CHECK ALL CRANE MOTIONS TO INSURE THAT WIRING IS CORRECT.

SWITCH CONTACT RATING

PART NUMBER	DESCRIPTION	VOLTAGE
RB-1	SINGLE SPEED	24 - 125 VAC
RB-2A	TWO-SPEED CUMULATIVE	24 - 125 VAC

NOTE: NOT DESIGNED FOR DC CIRCUITS

THE RB-1 AND RB-2A SWITCHES ARE LISTED BY UNDERWRITERS LABORATORIES, INC. AND C.S.A.

THE SWITCHES SUPPLIED WITH THIS STATION ARE RATED AT CURRENTS SUBSTANTIALLY HIGHER THAN THOSE NORMALLY ENCOUNTERED IN CONTROL APPLICATIONS. IT SHOULD BE NOTED, HOWEVER, THAT ELECTRICAL FAILURES IN ASSOCIATED EQUIPMENT CAN CAUSE CURRENTS TO FLOW WHICH FAR EXCEED EVEN THESE HIGHER RATINGS.

PUSH-BUTTON INSERT RATING: 125 VAC, ONE AMP CONTINUOUS PER CONTACT

PUSH BUTTON INSERTS RPB SERIES

SCHEMATIC & OPERATIONAL DIAGRAMS

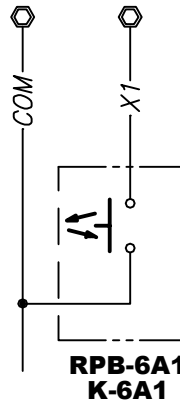
⚠ WARNING

MAKE CERTAIN POWER SUPPLY IS DISCONNECTED BEFORE INSTALLING, REPAIRING, OR WORKING IN THE PROXIMITY OF ANY ELECTRICAL SYSTEM. ONLY QUALIFIED ELECTRICAL PERSONNEL SHOULD INSTALL OR REPAIR THESE PRODUCTS.

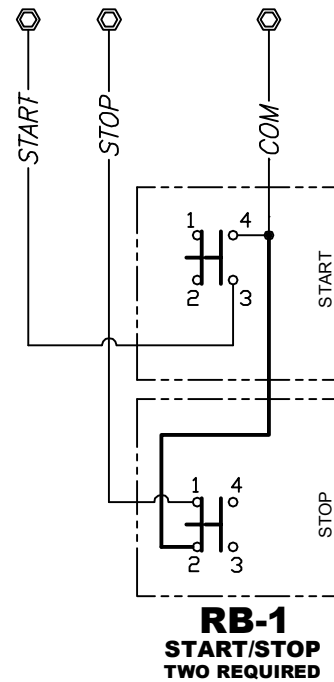
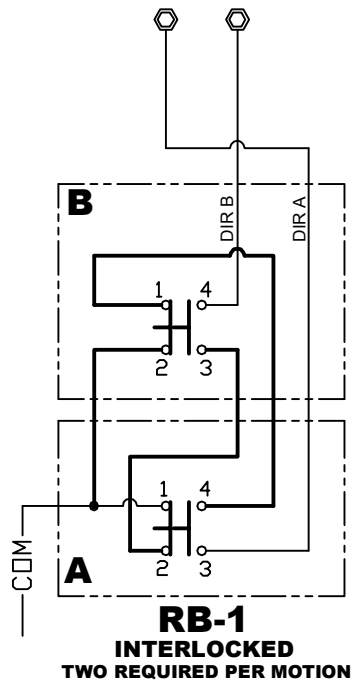
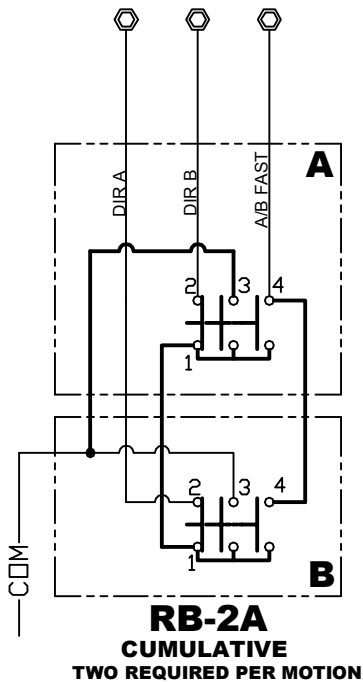
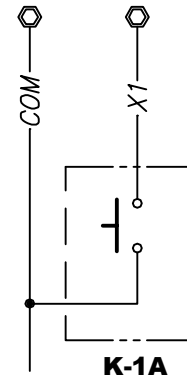
NOT DESIGNED FOR DC CIRCUITS

START/STOP INSERTS

MAINTAINED



MOMENTARY



PUSH-BUTTON INSERT RATING: 125 VAC, ONE AMP CONTINUOUS PER CONTACT