



1351 W. Second Street
 Oconomowoc, WI 53066
 Phone: 262-567-2288; 800-434-0062
 Fax: 262-567-0857
 E-mail: sales@ductowire.com

1445 Norjohn Ct. Unit 10
 Burlington, Ontario, Canada L7L 0E6
 Phone: 905-331-2612; 800-361-WIRE (9473)
 Fax: 905-331-6639; 800-663-0933
 E-mail: dow@ductowire.ca

ductowire.com

PUSH BUTTON INSERTS L SERIES

SCHEMATIC & OPERATIONAL DIAGRAMS

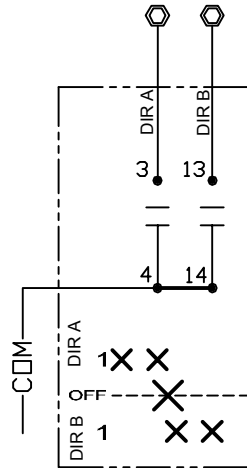
(MULTI-SPEED INSERTS ARE ALL PROGRESSIVE STEP UNLESS SPECIFIED)

⚠ WARNING

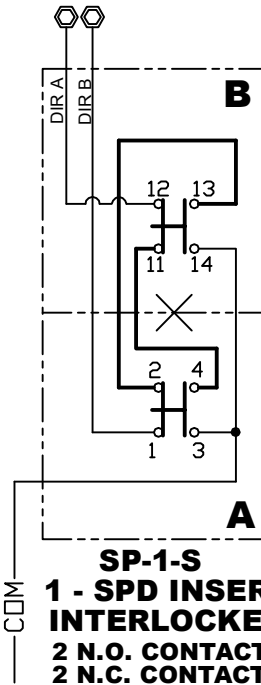
MAKE CERTAIN POWER SUPPLY IS DISCONNECTED BEFORE INSTALLING, REPAIRING, OR WORKING IN THE PROXIMITY OF ANY ELECTRICAL SYSTEM. ONLY QUALIFIED ELECTRICAL PERSONNEL SHOULD INSTALL OR REPAIR THESE PRODUCTS.

NOT DESIGNED FOR DC CIRCUITS

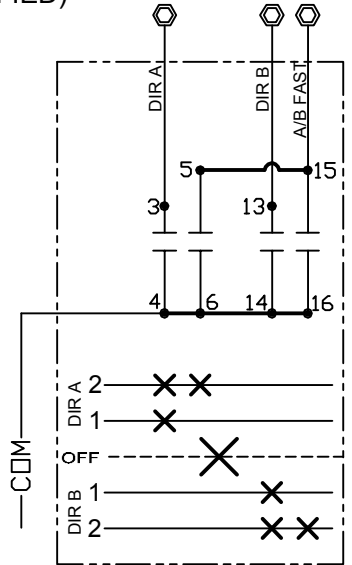
Duct-O-Wire® Company reserves the right to alter or amend technical specifications at any time without notice.



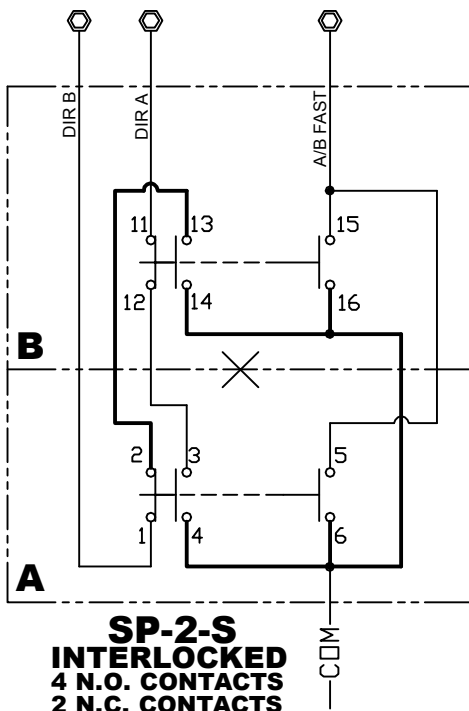
SP-1
1 - SPEED INSERT
2 N.O. CONTACTS



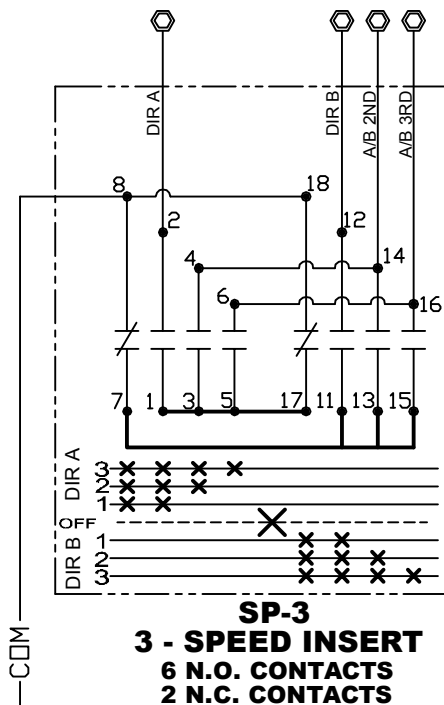
SP-1-S
1 - SPD INSERT
INTERLOCKED
2 N.O. CONTACTS
2 N.C. CONTACTS



SP-2
2 - SPEED INSERT
4 N.O. CONTACTS



SP-2-S
INTERLOCKED
4 N.O. CONTACTS
2 N.C. CONTACTS



SP-3
3 - SPEED INSERT
6 N.O. CONTACTS
2 N.C. CONTACTS

PUSH-BUTTON INSERT RATING: 125 VAC, ONE AMP CONTINUOUS PER CONTACT

PUSH BUTTON INSERTS L SERIES

SCHEMATIC & OPERATIONAL DIAGRAMS

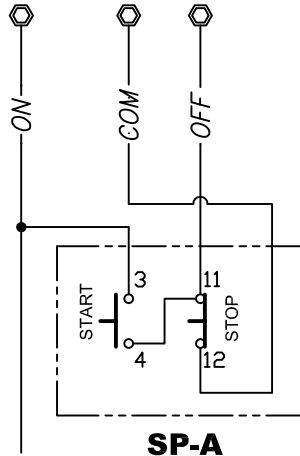
⚠ WARNING

MAKE CERTAIN POWER SUPPLY IS DISCONNECTED BEFORE INSTALLING, REPAIRING, OR WORKING IN THE PROXIMITY OF ANY ELECTRICAL SYSTEM. ONLY QUALIFIED ELECTRICAL PERSONNEL SHOULD INSTALL OR REPAIR THESE PRODUCTS.

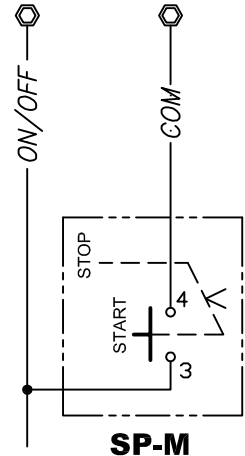
NOT DESIGNED FOR DC CIRCUITS

Duct-O-Wire® Company reserves the right to alter or amend technical specifications at any time without notice.

START/STOP INSERTS

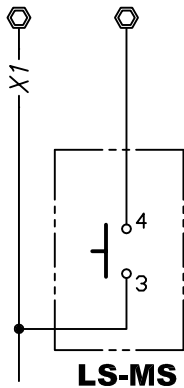


SP-A
MOMENTARY

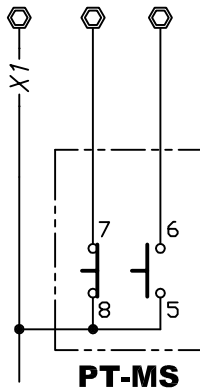


SP-M
1 N.O. CONTACT MAINTAINED

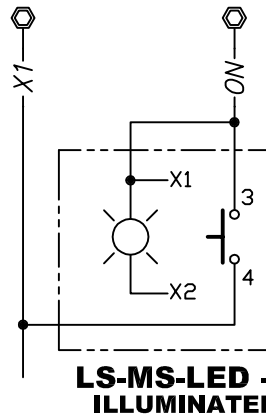
MOMENTARY SWITCHES



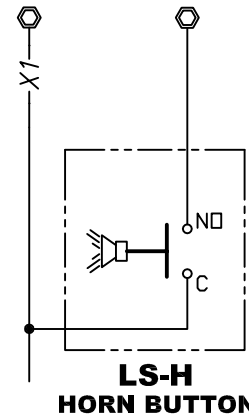
LS-MS



PT-MS

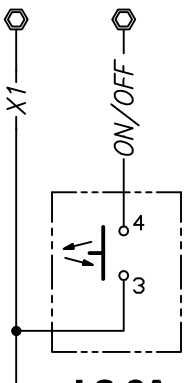


LS-MS-LED - x
ILLUMINATED
"x" = SPECIFY COLOR

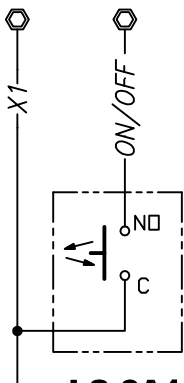


LS-H
HORN BUTTON

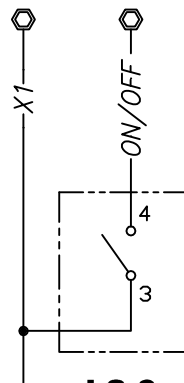
MAINTAINED SWITCHES



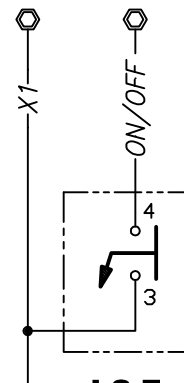
LS-6A
PUSH ON/OFF



LS-6A1
MINI PUSH ON/OFF



LS-6
TOGGLE



LS-7
KEY SWITCH

PUSH-BUTTON INSERT RATING: 125 VAC, ONE AMP CONTINUOUS PER CONTACT

PUSH BUTTON INSERTS L SERIES

SCHEMATIC & OPERATIONAL DIAGRAMS

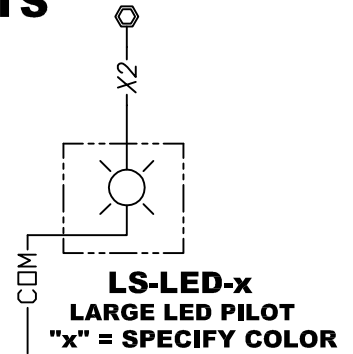
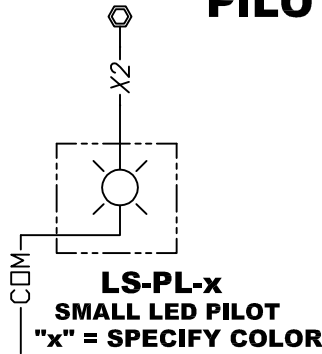
⚠ WARNING

MAKE CERTAIN POWER SUPPLY IS DISCONNECTED BEFORE INSTALLING, REPAIRING, OR WORKING IN THE PROXIMITY OF ANY ELECTRICAL SYSTEM. ONLY QUALIFIED ELECTRICAL PERSONNEL SHOULD INSTALL OR REPAIR THESE PRODUCTS.

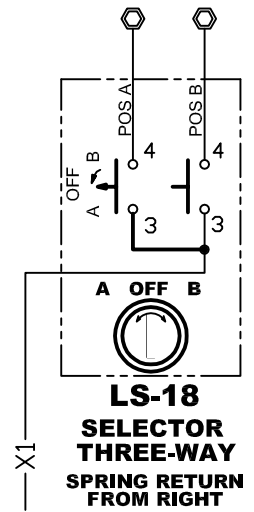
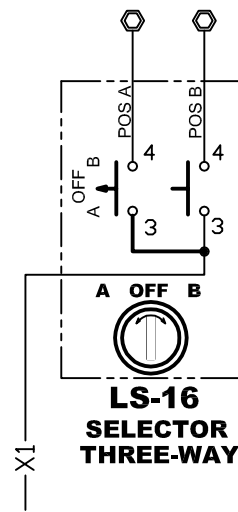
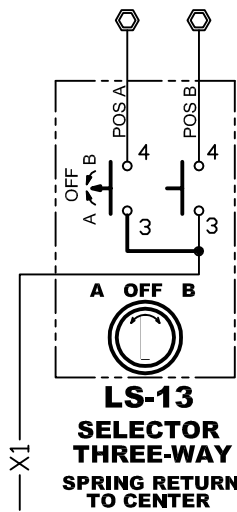
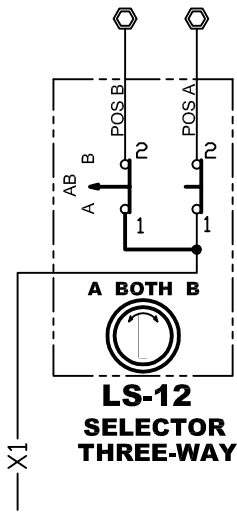
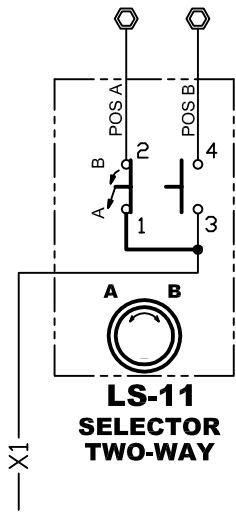
NOT DESIGNED FOR DC CIRCUITS

Duct-O-Wire® Company reserves the right to alter or amend technical specifications at any time without notice.

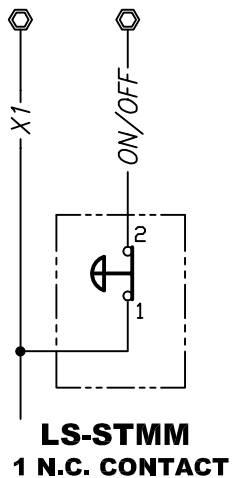
PILOT LIGHTS



SELECTOR SWITCHES



E-STOP

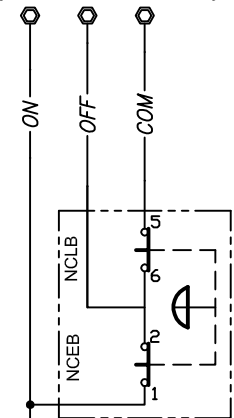
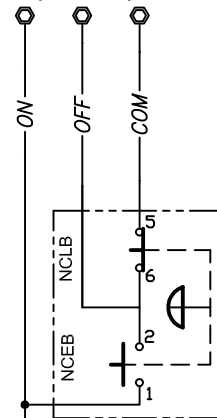
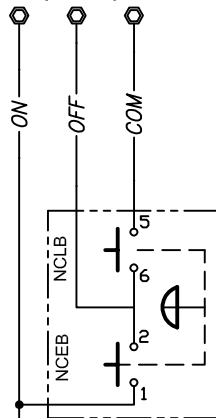


3 POSITION E-STOP

POSITION 1 = OFF (DOWN)

POSITION 2 = RUN (CENTER)

POSITION 3 = START (PULL - MOMENTARY)



LS-STMM-A E-STOP WITH MOMENTARY START

PUSH-BUTTON INSERT RATING: 125 VAC, ONE AMP CONTINUOUS PER CONTACT

PUSH BUTTON INSERTS L SERIES INSTALLATION DIAGRAM

