



1351 W. Second Street
 Oconomowoc, WI 53066
 Phone: 262-567-2288; 800-434-0062
 Fax: 262-567-0857
 E-mail: sales@ductowire.com

1445 Norjohn Ct., Unit 10
 Burlington, ON L7L 0E6
 Phone: 905-331-2612; 800-361-WIRE (9473)
 Fax: 905-331-6639; 800-663-0933
 E-mail: dow@ductowire.ca

J SERIES PUSH BUTTON INSERTS RPS SERIES PSW SERIES

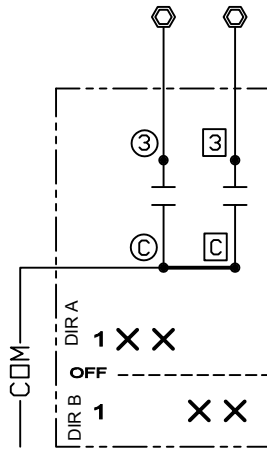
SCHEMATIC & OPERATIONAL DIAGRAMS

(MULTI-SPEED INSERTS ARE ALL PROGRESSIVE STEP)

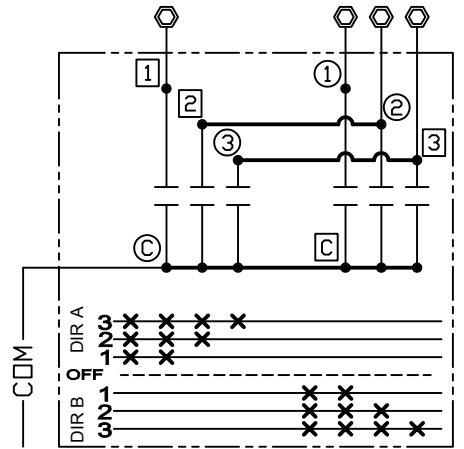
⚠ WARNING
 MAKE CERTAIN POWER SUPPLY IS DISCONNECTED BEFORE INSTALLING, REPAIRING, OR WORKING IN THE PROXIMITY OF ANY ELECTRICAL SYSTEM. ONLY QUALIFIED ELECTRICAL PERSONNEL SHOULD INSTALL OR REPAIR THESE PRODUCTS.

NOT DESIGNED FOR DC CIRCUITS

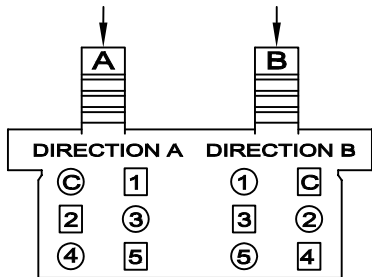
MECHANICAL INTERLOCK MODELS PB-1B, PB-3B, PB-5B, ETC. USE THE SAME WIRING DIAGRAM AS THEIR RESPECTIVE "A" MODEL.



**PB-1A
1 - SPEED INSERT**

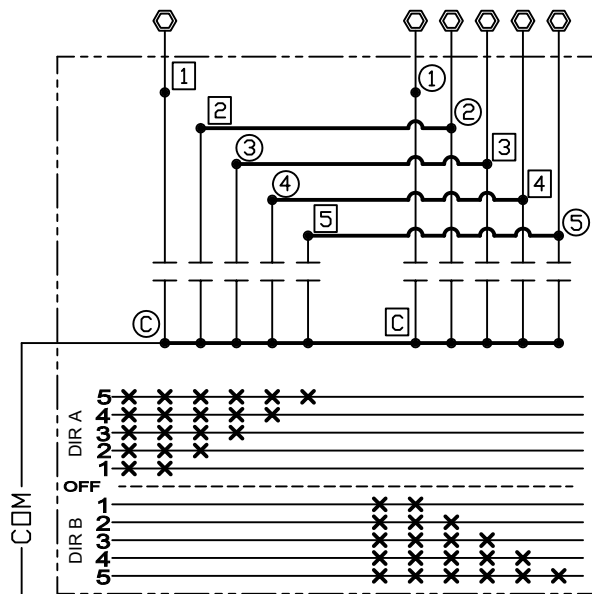


**PB-3A
MULTI - SPEED INSERT
3 - SPEED WIRING**



□ FRONT SIDE TERMINALS (DIR A)
 ○ BACK SIDE TERMINALS (DIR B)

**TYPICAL PB
TERMINAL
LAYOUT**



**PB-5A
MULTI - SPEED INSERT
5 - SPEED WIRING**

NOTES:

1. TERMINALS FOR SINGLE AND MULTI-SPEED PUSH BUTTON INSERTS ARE NOT ALL FOUND ON THE SAME SIDE OF THE PUSH-BUTTON TERMINAL BLOCK.
2. THE NON-MECHANICAL SWITCHES SHOULD BE ELECTRICALLY INTERLOCKED IN THE CONTROL PANEL THROUGH THE REVERSING CONTACTOR.

PUSH-BUTTON INSERT RATING: 125 VAC, ONE AMP CONTINUOUS PER CONTACT

PUSH BUTTON INSERTS

J SERIES RPS SERIES PSW SERIES

SCHEMATIC & OPERATIONAL DIAGRAMS

⚠ WARNING

MAKE CERTAIN POWER SUPPLY IS DISCONNECTED BEFORE INSTALLING, REPAIRING, OR WORKING IN THE PROXIMITY OF ANY ELECTRICAL SYSTEM. ONLY QUALIFIED ELECTRICAL PERSONNEL SHOULD INSTALL OR REPAIR THESE PRODUCTS.

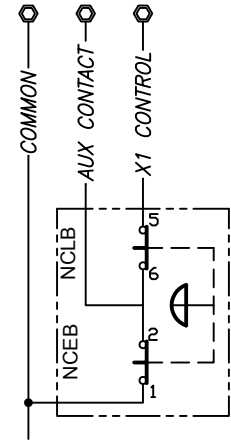
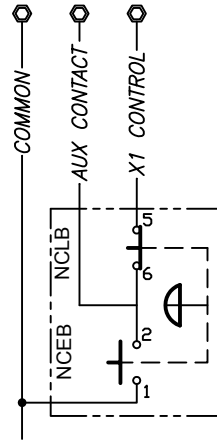
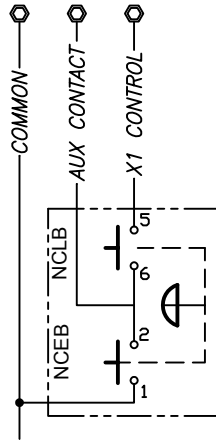
NOT DESIGNED FOR DC CIRCUITS

3 POSITION E-STOP

POSITION 1 = OFF (DOWN)

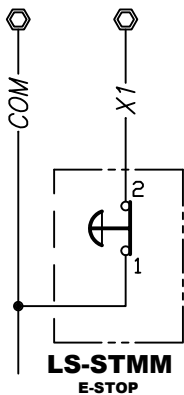
POSITION 2 = RUN (CENTER)

POSITION 3 = START (PULL - MOMENTARY)

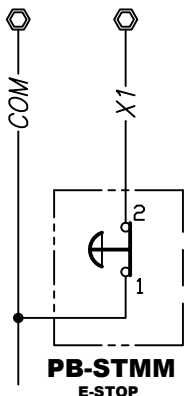


LS-STMM-A E-STOP WITH MOMENTARY START

E-STOP

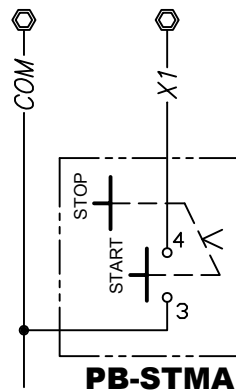


LS-STMM
E-STOP

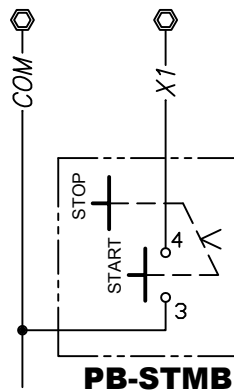


PB-STMM
E-STOP

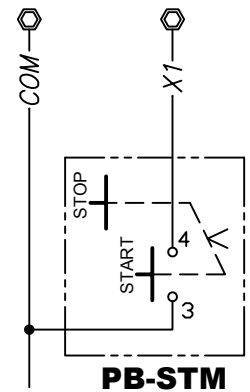
MAINTAINED START/STOP INSERTS



PB-STMA

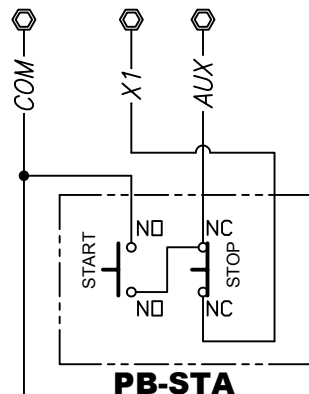


PB-STMB

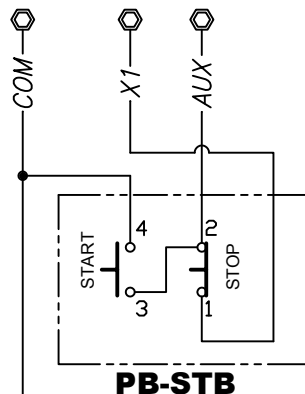


PB-STM

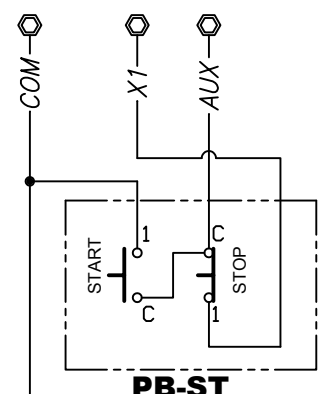
MOMENTARY START/STOP INSERTS



PB-StA



PB-StB



PB-St

PUSH-BUTTON INSERT RATING: 125 VAC, ONE AMP CONTINUOUS PER CONTACT