



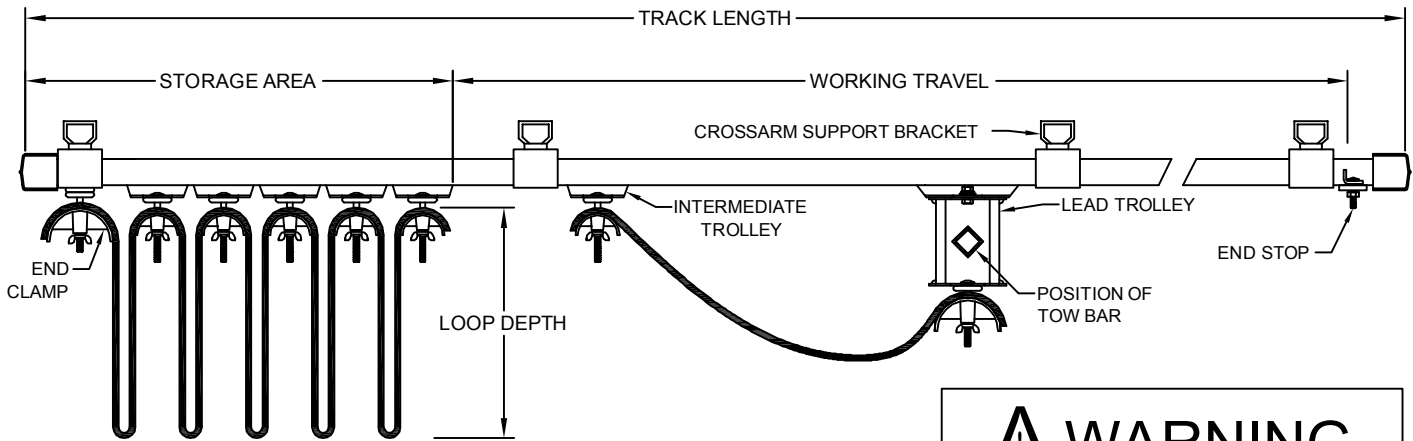
1351 W. Second Street
 Oconomowoc, WI 53066
 Phone: 262-567-2288; 800-434-0062
 Fax: 262-567-0857
 E-mail: sales@ductowire.com

1445 Norjohn Ct., Unit 10
 Burlington, ON L7L 0E6
 Phone: 905-331-2612; 800-361-WIRE (9473)
 Fax: 905-331-6639; 800-663-0933
 E-mail: dow@ductowire.ca

INSTALLATION INSTRUCTIONS - 12 GAUGE C-TRACK SYSTEM

For Both Galvanized and Stainless Steel Systems

TYPICAL SYSTEM LAYOUT



Use tow chains or straps when system speed is over 150 FPM.

Consult Factory when:

- Atmosphere is corrosive or dusty.
- Hazardous materials are present.
- Speeds exceed 250 FPM.
- Components not shown or listed are required (including special flat cable sizes.)

⚠ WARNING

MAKE CERTAIN POWER SUPPLY IS DISCONNECTED BEFORE INSTALLING, REPAIRING, OR WORKING IN THE PROXIMITY OF ANY ELECTRICAL SYSTEM. ONLY QUALIFIED ELECTRICAL PERSONNEL SHOULD INSTALL OR REPAIR THESE PRODUCTS.

STEP 1 DETERMINE BRACKET AND HANGER SPACING

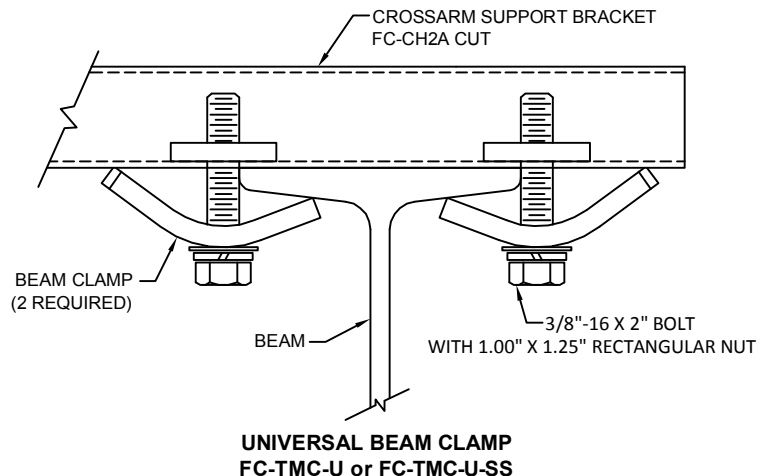
- Determine the loop depth (3 to 4 ft. is typical).
- Calculate the total load per trolley.
- Use the following guidelines to space brackets and hangers.

Trolley Load	Spacing
10 lbs.	10 ft.
30 lbs.	8 ft.
40 lbs.	7 ft.
50 lbs.	6 ft.

- In the storage area of the track, space the support brackets at 5 ft.
- When installing independent pushbutton tracks, use 5 ft. spacing throughout the entire track length. Pulling the station control trolley from the floor adds additional stress on the track hangers.

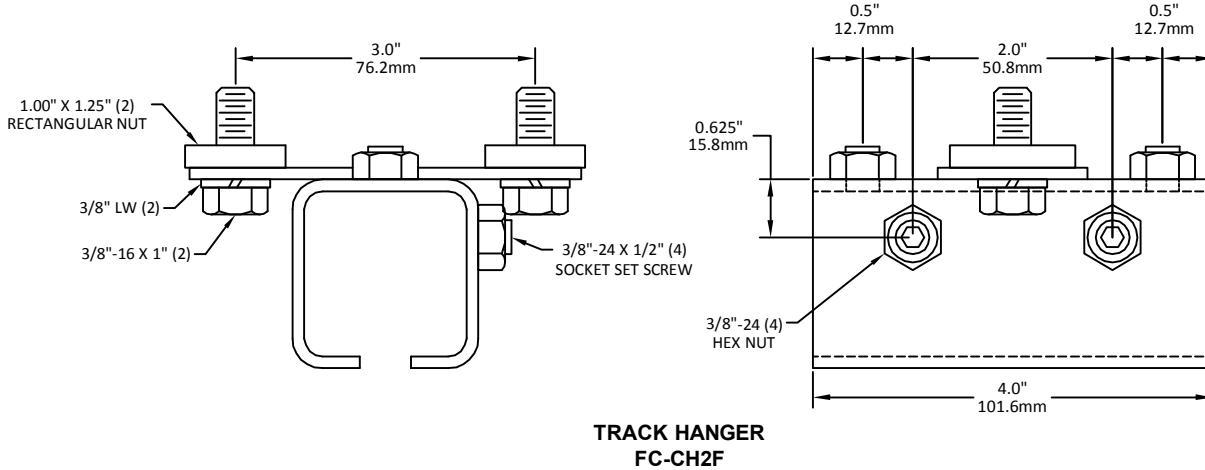
STEP 2 INSTALL CROSSARM SUPPORT BRACKETS

Install crossarm support brackets using the spacing determined in Step 1.



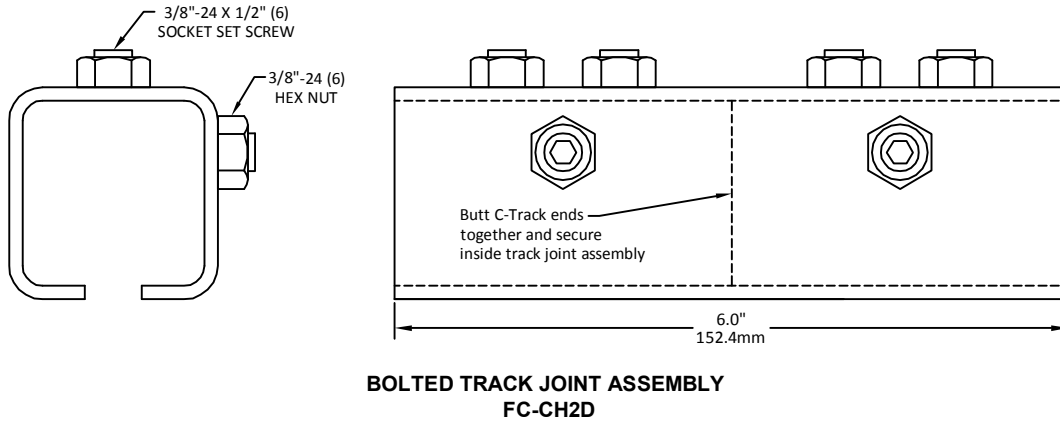
STEP 3: INSTALL HANGERS

Install track hangers on crossarms, leaving clamping bolts loose.



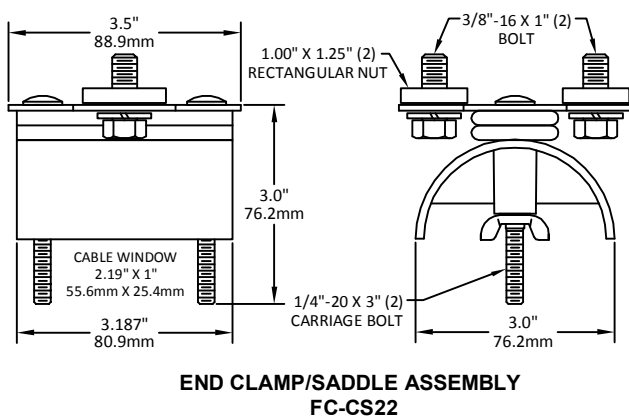
STEP 4 INSTALL C-TRACK

Slide C-Track sections into hanger clamps. Butt C-Track together and secure with track joint assembly. Firmly tighten joint assembly bolts and hanger clamping bolts, making sure that the track is straight. Tighten the set screws with a 3/16" Allen wrench, then tighten the lock nut over the set screw.



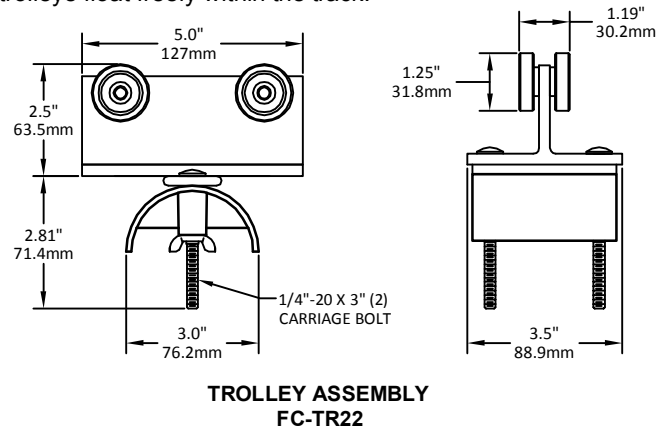
STEP 5 INSTALL END CLAMP

Install the end clamp assembly FC-CS21, FC-CS22 or FC-CS24 onto the cable-storage end of the track.



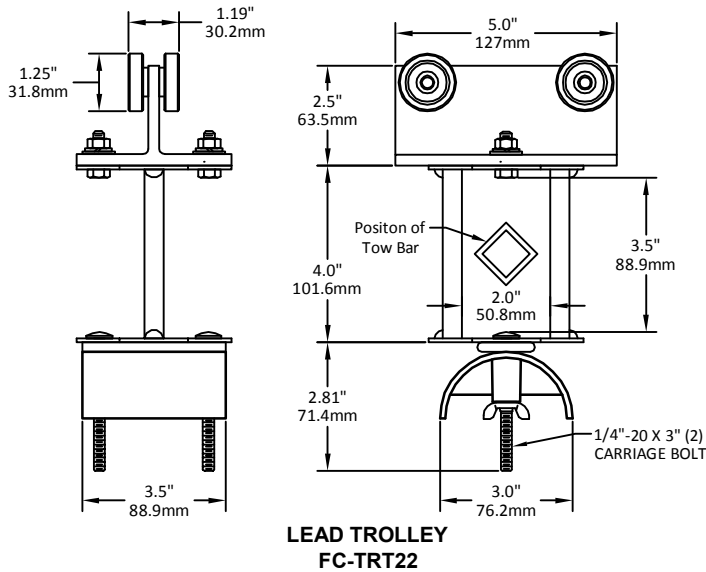
STEP 6 INSTALL TROLLEY & SADDLE ASSEMBLIES

Install trolley/saddle assemblies into the C-Track. Be sure all trolleys float freely within the track.



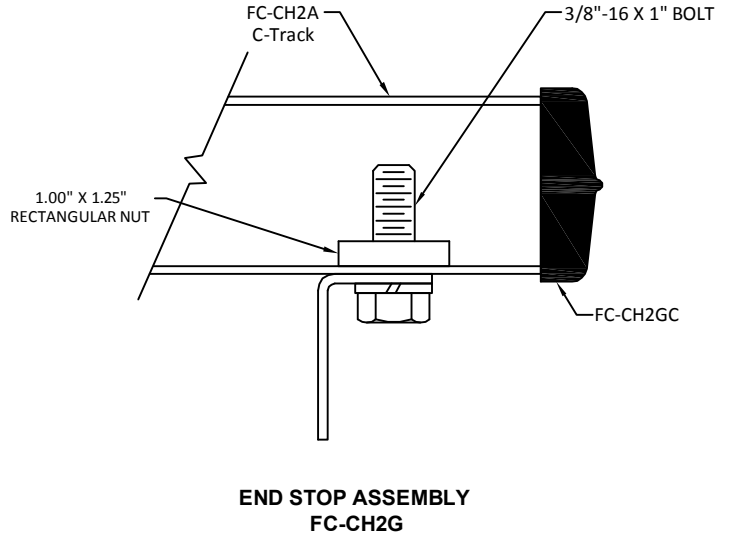
STEP 7 INSTALL LEAD TROLLEY

Insert the lead trolley as the last of the trolleys. When installing a pushbutton track, see Step 12.



STEP 8 INSTALL END STOP

Install the end stop assembly on the track end opposite the end clamp. Slide the end stop into the slot of the C-Track end and securely tighten the nut.



STEP 9 INSTALL FLAT CABLE

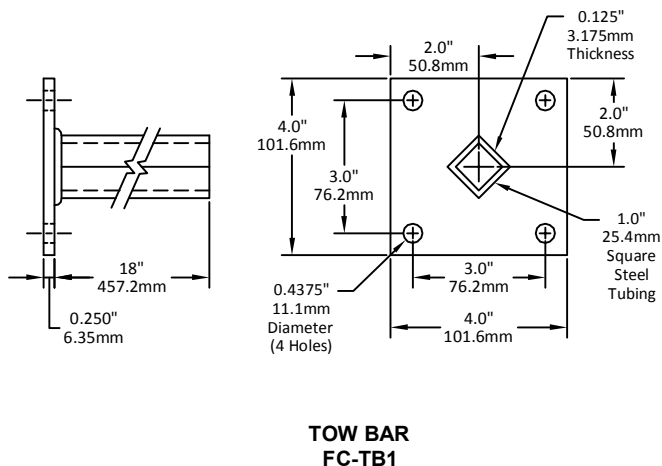
Feed the flat cables into the trolleys between the plastic clamp pad and the saddle. Loop lengths should be equal and to the depth determined in step one. Duct-O-Wire® cable markings are two feet apart from any word in the first marking to the same word in the next marking. If you measure off 3 markings from one saddle clamp to the next, you will have a 3 ft. loop drop. If you go to the 4th mark, you will have a 4 ft. loop drop.

STEP 10 INSTALL JUNCTION BOXES

Install cable connectors on approved junction boxes and insert cables through the rubber bushings. Tighten the connector nut firmly. The connector should be installed at the bottom of the junction box for outdoor applications. Heat shrink cable fittings are available for multiple cable installations.

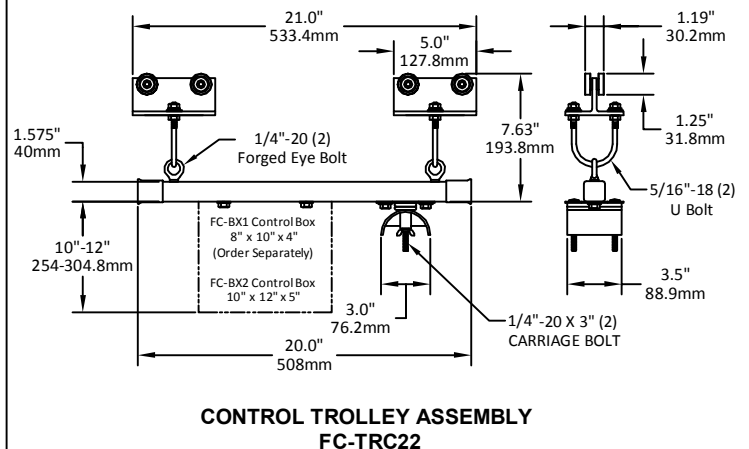
STEP 11 INSTALL TOW BAR

Install the tow bar on equipment to be electrified. The tow bar should be centered within the tow trolley.



STEP 12 INSTALL CONTROL TROLLEY

If your system utilizes an independent push button track, install the control trolley as the lead item and attach a junction box. Feed the cables through the saddle into the junction box and secure them with cable connectors.



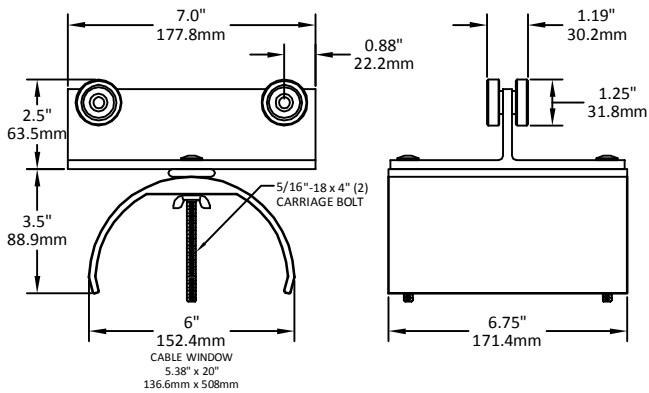
STEP 13 TEST INSTALLATION

Run the entire system back and forth several times over the entire track length to ensure proper operation. Use cable ties or organizers at the bottom of the multiple cable loads to prevent cable twisting or separation.

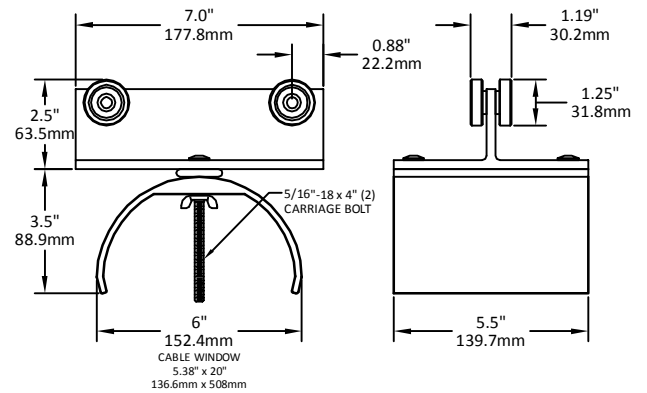
WARNING: Be sure that the cable loop from the lead trolley saddle to the hoist/trolley connections does not place any side pull on the lead trolley. Cable loops must clear all other equipment.

OPTIONAL TROLLEYS

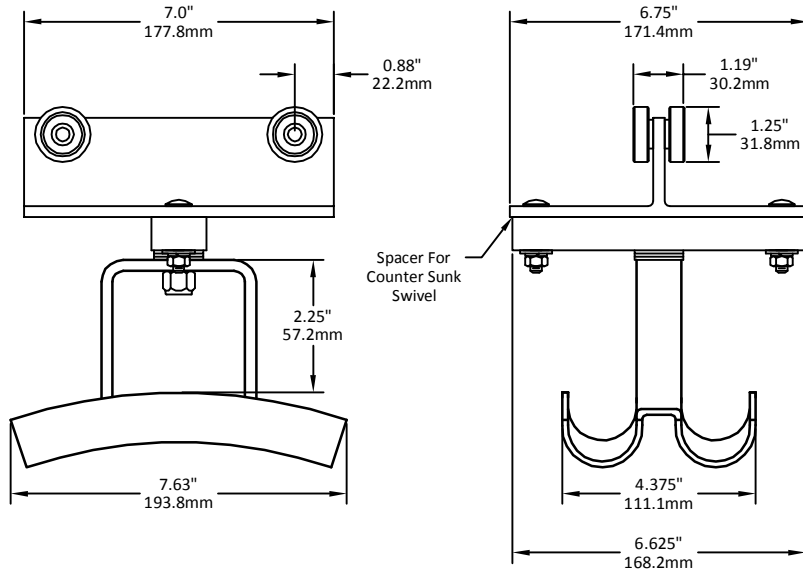
For additional trolley models, see brochure and price list.



**TROLLEY ASSEMBLY
FC-TR21**



**TROLLEY ASSEMBLY
FC-TR24**



**TROLLEY ASSEMBLY
FC-TR21-2**